



# FormEffects



# Architectural Concrete Cladding & Wall Panels

Facade Cladding	4
Wall Panels	8
HD-GFRC	11
Sustainability	12
Cladding Installation	14
Wall Panel Installation	18
Panel Collection	20
Custom	29
Contact	31

# Authentic concrete cladding for building facades.

The FormEffects collection is offered in an exterior grade cladding, bringing our premier range of precast concrete panels to building facades across the country. Our exterior cladding panels utilize a High Density GFRC (HD-GFRC) mix design formulated for superior performance of facade cladding installations. Cladding can be installed using a concealed fastener rainscreen system or direct face fastening.





# Advantages of FormEffects panels.

## Authentic

Fully integral concrete panels using real textures from natural materials.

## Lightweight

5/8" to 3/4" thick panels weigh 7–8.5lbs per sqft, making them easier to handle and install.

## Non-flammable

Glass Fiber Reinforced Concrete cladding is a non-combustible material.

## Versatile

Suitable for exterior or interior applications using a variety of installation methods to best suit your project.

## Thermal Resistance

The high density concrete mix reduces moisture absorption and provides stability against extreme weather.

## Impact Resistance

Two layers of glass fiber reinforcing mesh provides excellent structural integrity.

# Concrete wall surfaces made easy.

Bring the authentic look of poured architectural concrete into any space with FormEffects. Our wall panels are fabricated using glass fiber reinforced concrete, making them thinner, stronger, and lighter than conventional concrete. We use highly detailed and natural textures that allows designers, contractors, and homeowners alike to transform any space with concrete. Panels are easily installed with adhesive on a variety of interior wall substrates.







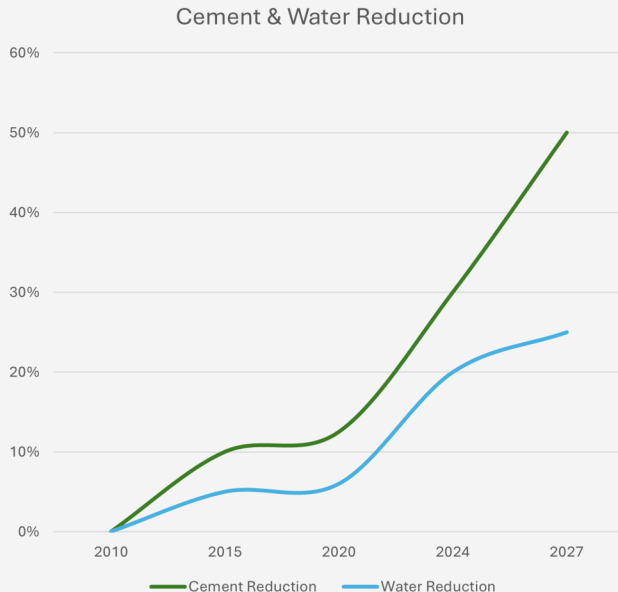
# HD-GFRC

At Formeffects, we have formulated a High Density GFRC mix specifically designed to provide superior performance for cladding applications. GFRC is the result of mixing a combination of cement, sand, admixtures, water, and glass fiber reinforcing. Common GFRC formulations result in a density of 105lbs/cf, while our HD-GFRC mix has a density of 138lbs/cf. The 30% increase in density is the result of careful engineering to minimize particle sizing throughout the mix matrix and the water ratio to create a tightly packed concrete. The densely packed HD-GFRC mix provides superior performance in important attributes for cladding applications:

# Reducing embodied carbon for sustainable concrete.

At FormEffects, we are committed to creating a sustainable concrete product while maintaining the aesthetic, performance, and cost-effectiveness that project teams seek from architectural concrete.

Our high density GFRC mix reduces cement usage up to 30% by using a 100% recycled postconsumer pozzolan that is regionally sourced as a substitute. The reduced cement content of the mix also requires less water to properly hydrate it, reducing water demand by 20%.





# Facade Cladding Installation

## Concealed Fastener / Rain-screen

FormEffects' cladding panels are designed to be compatible with the industry's most widely used concealed fastener and rainscreen systems. Our panels are pre-drilled according to an engineered layout for KEIL undercut anchors. The female threads of these anchors enable hangers to be bolted to the rear surface of the concrete panel. This arrangement allows the panel to be hung onto continuous horizontal channels, facilitating horizontal adjustments. Meanwhile, the hangers provide concealed vertical adjustments. The end result is a seamless installation free from visible hardware.

FormEffects panel (30" x 50" x 5/8" thick)

Insulation in between the stand off bracket

Rainscreen Hanger Clip

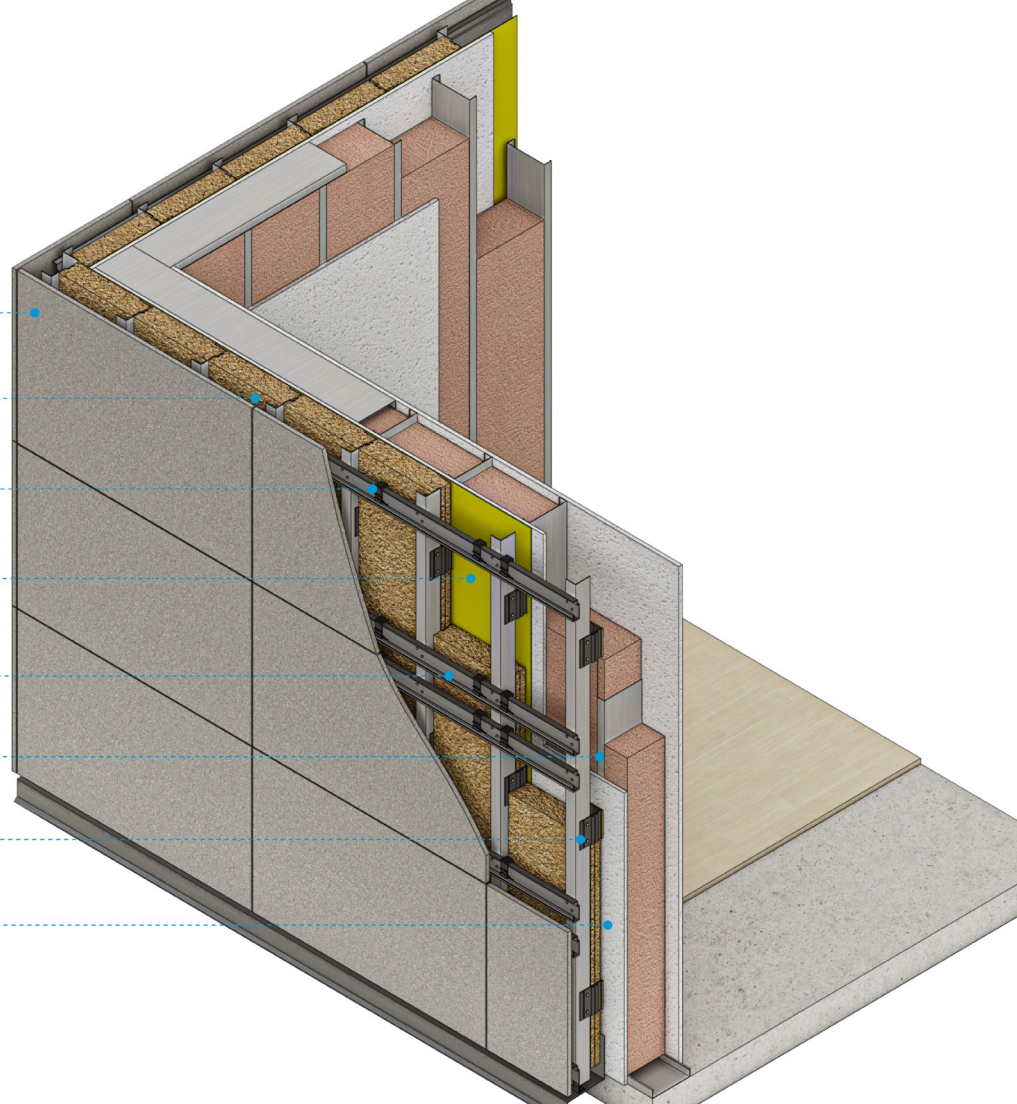
Weather Barrier

Rainscreen Horizontal Rail

Metal stud framing  
(16" on center spacing)

Standoff bracket

Exterior Grade sheathing

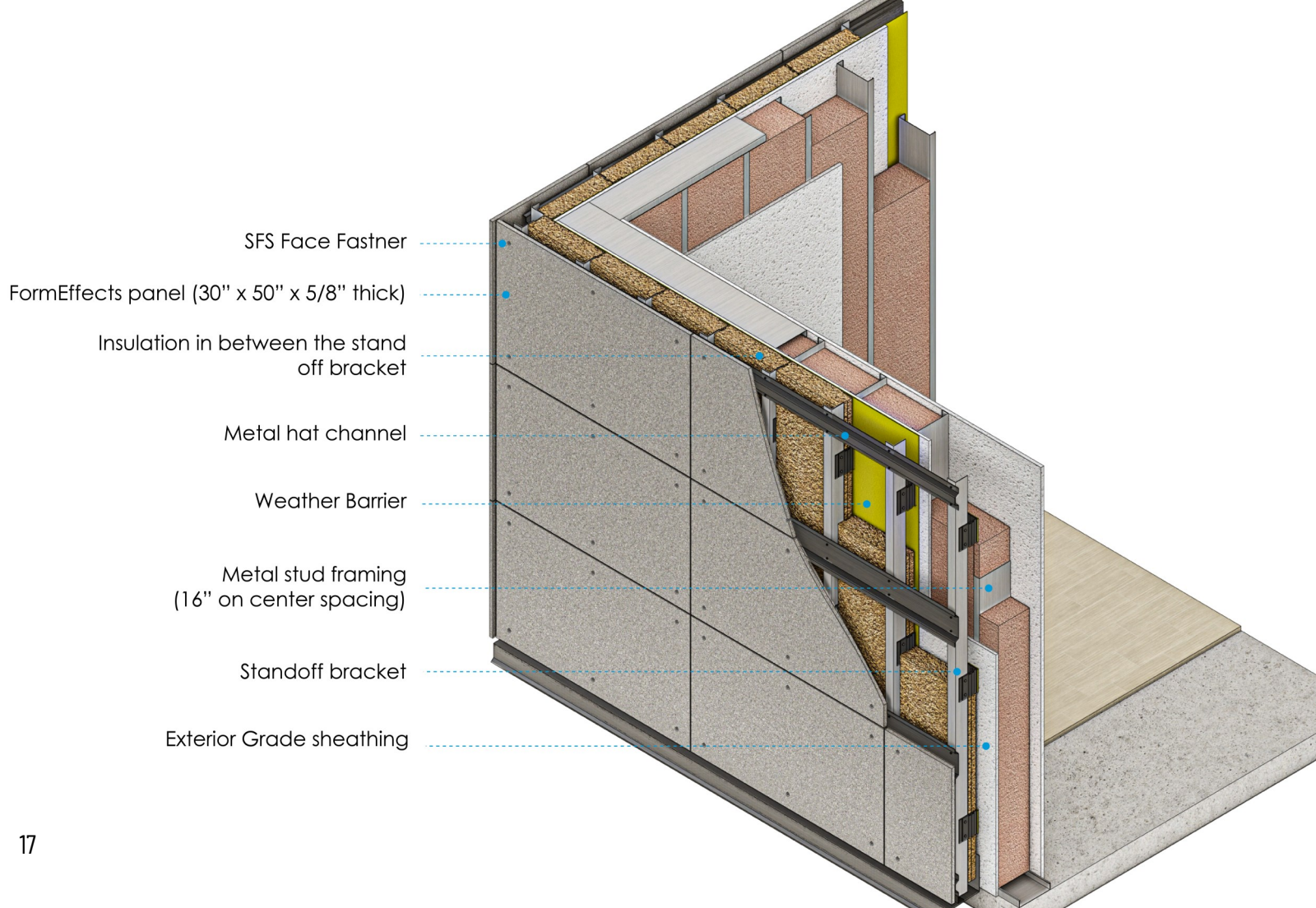


# Facade Cladding Installation

## Visible Fastener

FormEffects' panels can also utilize visible fastening, which allows fasteners to be driven through the face of the panel into a metal hat channel located behind the panel. The panel can be easily pre-drilled, and the self-tapping fastener will pierce the metal channel. Fasteners, which are color-matched to the FormEffects panel, are readily available. This installation method provides significant flexibility, particularly in the field, enabling quick navigation around challenging conditions. Face fastening is also cost-effective and time-efficient, without compromising the performance of the installation.





SFS Face Fastner

FormEffects panel (30" x 50" x 5/8" thick)

Insulation in between the stand off bracket

Metal hat channel

Weather Barrier

Metal stud framing (16" on center spacing)

Standoff bracket

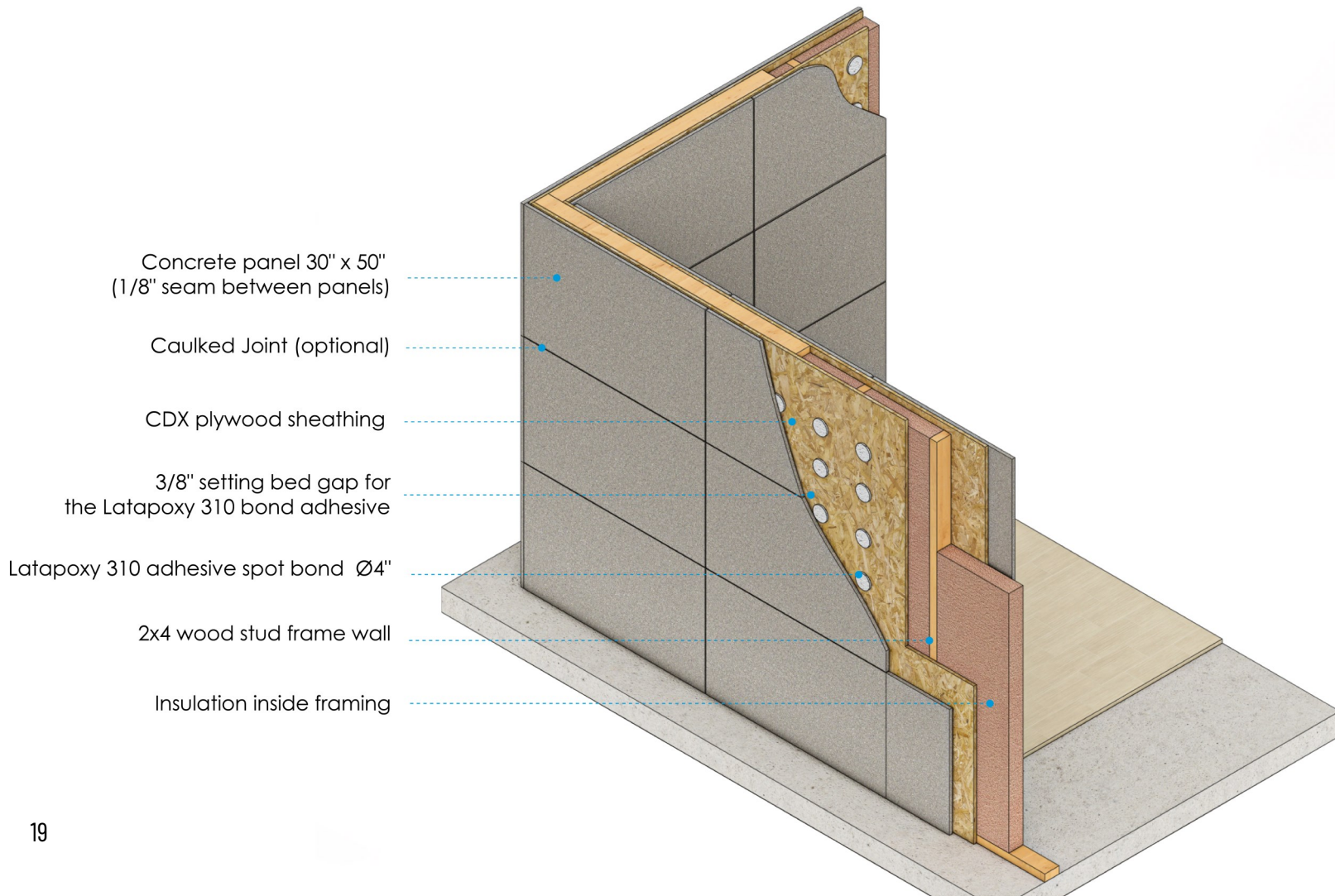
Exterior Grade sheathing

# Wall Panel Installation

FormEffects panels are sized and designed to allow for simple installation using a high strength epoxy adhesive. The adhesive product most recommended for wall panel installations is Laticrete Latapoxy 310 which allows for vertical installations up to 30 feet high. The following installation procedure is provided as an overview; individual expertise will still be required to apply this installation to your specific project.

## Suitable Substrates

- Cement Backer Board
- CMU
- Exterior Grade Plywood
- Concrete



Concrete panel 30" x 50"  
(1/8" seam between panels)

Caulked Joint (optional)

CDX plywood sheathing

3/8" setting bed gap for  
the Latapoxy 310 bond adhesive

Latapoxy 310 adhesive spot bond Ø4"

2x4 wood stud frame wall

Insulation inside framing

# The Collection

Coastal	21
Alpine	22
Ceruse	23
Fluted	24
Formwork	25
Honeycomb	26
Hammered	27
Meadow Plank	28

# Coastal

Our Coastal precast concrete panel features a unique board form finish. Concrete is cast on molds that capture the grain, fibers, and knots of natural 5" red wood planks which gives Coastal its distinguishing look. Coastal features a higher level of wood grain definition as well as intentional gaps between each plank in which the concrete frames the plank, known as "seepage gaps."

Length	50 in
Height	30 in
Thickness	5/8 in
Weight	72 lbs
Orientation	Horizontal, Vertical



# Alpine

Our Alpine precast concrete panel features a pine board form finish. Concrete is cast on molds that capture the grain, fibers, and knots of natural 5" pine wood planks which gives Alpine its distinguishing look. Our Alpine Board Form finish has a subtle refinement in comparison to our Coastal finish as the planks are placed with a tighter tolerance.

Length	50 in
Height	30 in
Thickness	5/8 in
Weight	72 lbs
Orientation	Horizontal, Vertical



# Ceruse

Our Ceruse precast concrete panel features a full sheet pine board form finish. Rather than using individual planks of wood as seen on our Coastal and Alpine panels, Ceruse maintains a full, un-interrupted, piece of wood.

Length	30 in
Height	50 in
Thickness	5/8 in
Weight	72 lbs
Orientation	Horizontal, Vertical



# Fluted

Our Fluted precast panel adds bold linear depth to any facade or wall surface with a 1/2" sine wave pattern that contains a subtle splatter texture.

Length	30 in
Height	50 in
Thickness	3/4 in
Weight	82 lbs
Orientation	Horizontal, Vertical





# Formwork

Our Formwork precast panel features a structural concrete design that is increasingly popular in modern organic architecture. Formwork panels create the appearance of a monolithic pour by placing formwork tie depressions spaced throughout the panel.

Length	50 in
Height	30 in
Thickness	3/4 in
Weight	82 lbs
Orientation	Horizontal, Vertical



# Honeycomb

Our Formwork precast panel features a structural concrete design that is increasingly popular in modern organic architecture. Formwork panels create the appearance of a monolithic pour by placing formwork tie depressions spaced throughout the panel.

Length	50 in
Height	30 in
Thickness	3/4 in
Weight	82 lbs
Orientation	Horizontal, Vertical



# Hammered

Our Hammered panel features a rough, weathered texture that enhances the natural tonal variations and depth of concrete. This finish is modeled through a technique known as bush hammering. The result is a panel that provides a unique texture that would highlight any wall or facade while also providing a durable, easy to maintain surface.

Length	50 in
Height	30 in
Thickness	5/8 in
Weight	72 lbs
Orientation	Horizontal, Vertical



# Meadow Plank

Our Meadow Plank features a distinct board form finish in individual 6" concrete planks. Concrete is cast on molds that capture the grain, fibers, and knots of natural 6" cypress wood planks that give the Meadow Plank its distinguishing look. The individual planks are smaller and lighter than our full size wall panels which helps make install and custom layouts easy in either horizontal or vertical orientation.

Length	6 in
Height	72 in
Thickness	5/8 in
Weight	20 lbs
Orientation	Horizontal, Vertical



# Need a custom solution?

With over 25 years of architectural precast concrete fabrication experience, FormEffects can help develop custom panels specifically for your project. We can custom tailor color, texture, size, and shape for a one of a kind panel solution. With our house CNC cutters, we can tackle complex shapes and patterns.



# Contact Us

website:

[www.formeffects.com](http://www.formeffects.com)

email:

[info@formeffects.com](mailto:info@formeffects.com)

phone:

**(732) 390-9944**

address:

**349 Dunhams Corner Rd.  
East Brunswick, NJ 08816**

Request samples or more information today at

[www.formeffects.com](http://www.formeffects.com)